

---

---

# Impact of Course Delivery Mode on Learner Engagement in MOOCs

xTalk Jan 12, 2021

— **Monika Avello**, Mary Ellen Wiltrout,  
Ana Bell, Christine von der Haar,  
Shira Fruchtman —

---

---

# 2 Course Delivery Modes for MOOCs

## Instructor-paced (IP)



# 2 Course Delivery Modes for MOOCs

## Instructor-paced (IP)

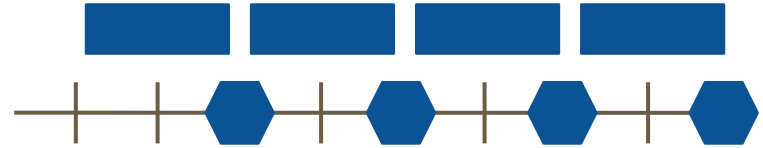
- Content released gradually



## 2 Course Delivery Modes for MOOCs

### Instructor-paced (IP)

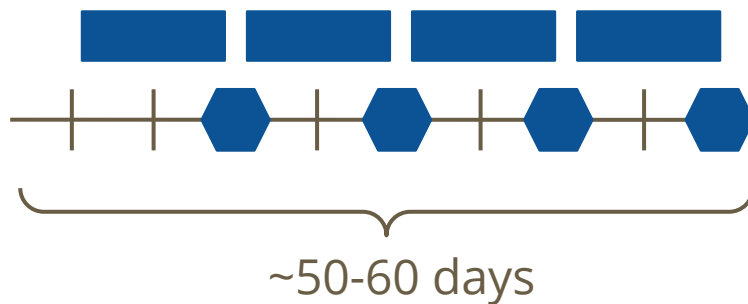
- Content released gradually
- Multiple deadlines



## 2 Course Delivery Modes for MOOCs

### Instructor-paced (IP)

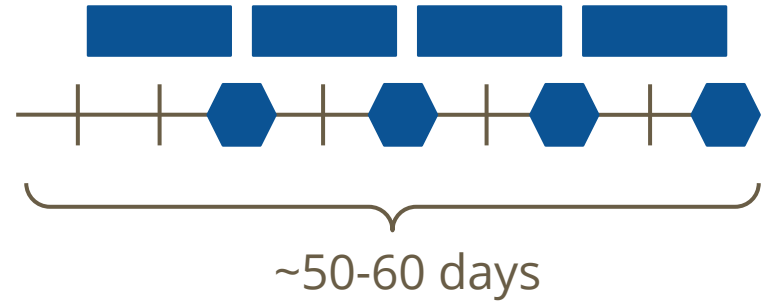
- Content released gradually
- Multiple deadlines
- Short duration



## 2 Course Delivery Modes for MOOCs

### Instructor-paced (IP)

- Content released gradually
- Multiple deadlines
- Short duration



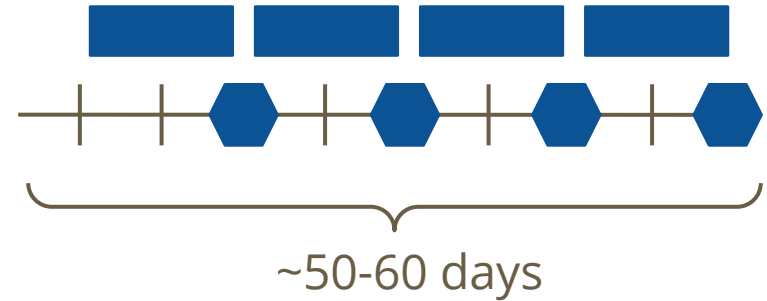
### Self-paced (SP)



## 2 Course Delivery Modes for MOOCs

### Instructor-paced (IP)

- Content released gradually
- Multiple deadlines
- Short duration



### Self-paced (SP)

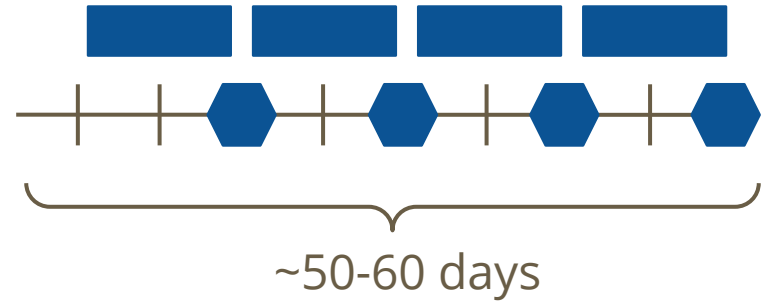
- Content released at once



## 2 Course Delivery Modes for MOOCs

### Instructor-paced (IP)

- Content released gradually
- Multiple deadlines
- Short duration



### Self-paced (SP)

- Content released at once
- Single deadline at end

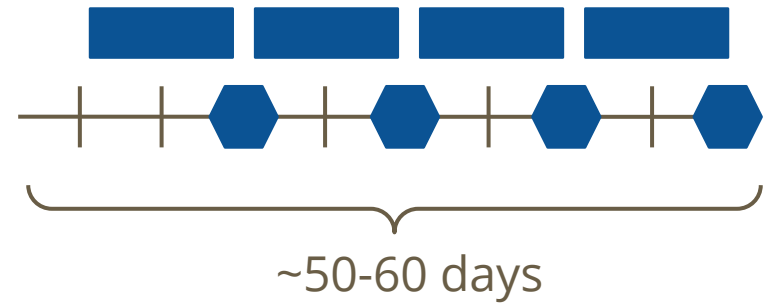




## 2 Course Delivery Modes for MOOCs

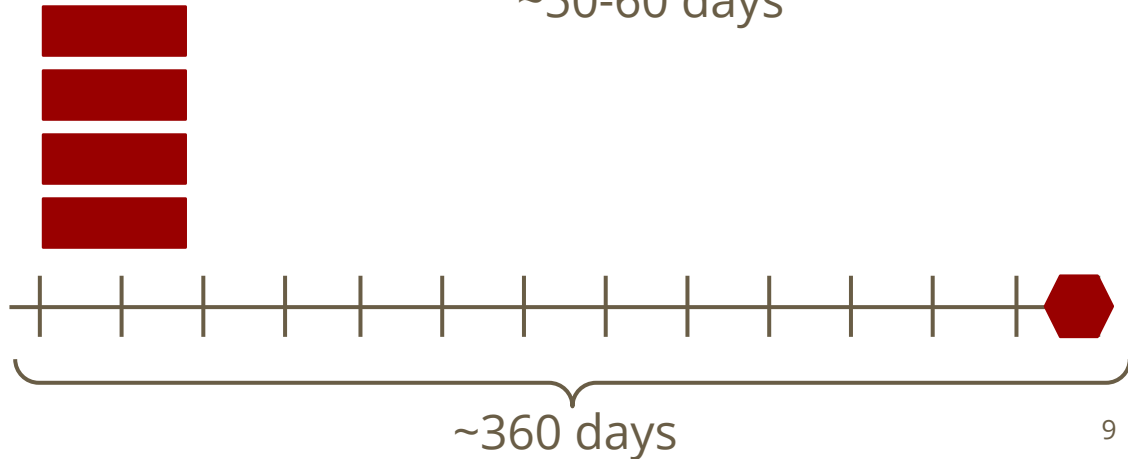
### Instructor-paced (IP)

- Content released gradually
- Multiple deadlines
- Short duration



### Self-paced (SP)

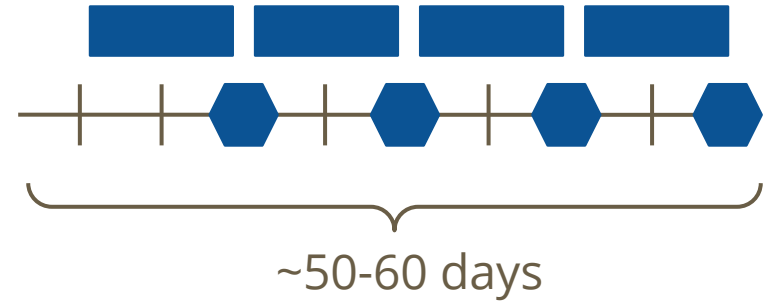
- Content released at once
- Single deadline at end
- Long duration



# 2 Course Delivery Modes for MOOCs

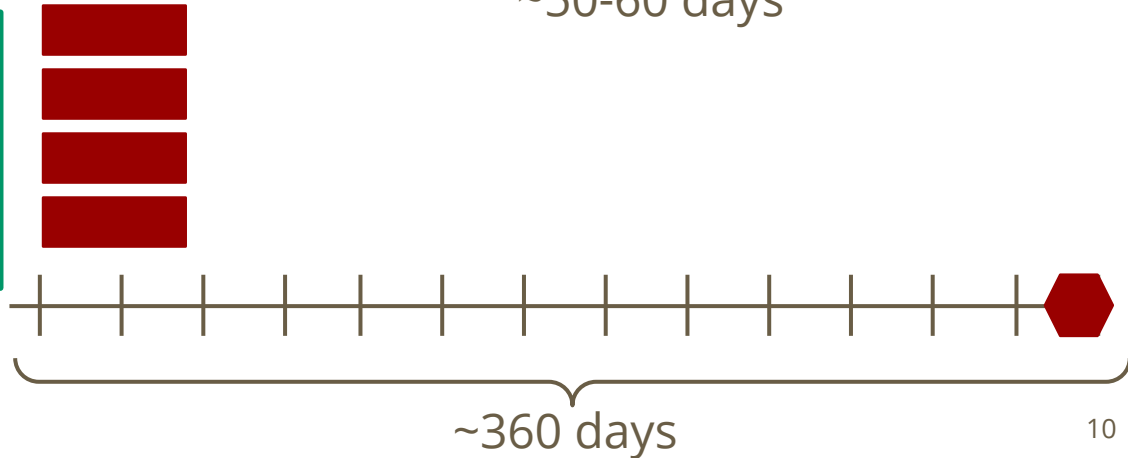
## Instructor-paced (IP)

- Content released gradually
- Multiple deadlines
- Short duration



## Self-paced (SP)

- Content released at once
- Single deadline at end
- Long duration



**Does running a MOOC in SP vs IP mode  
increase learner engagement?**

# Analyzed SP vs IP runs of 2 Computational MOOCs

- **Advanced Quantitative Biology**
  - ~3000 registered learners/run
  - 5 IP runs, 2 SP runs
  
- **Introductory Computer Programming**
  - ~85,000 registered learners/run
  - 8 IP runs, 1 SP run

# Running a MOOC in SP vs IP ...

- ... **did NOT** increase engagement metrics for all learners
  - Participating, exploring, completing, verifying
  - Posting to the forum, attempting a problem, watching a video

## Running a MOOC in SP vs IP ...

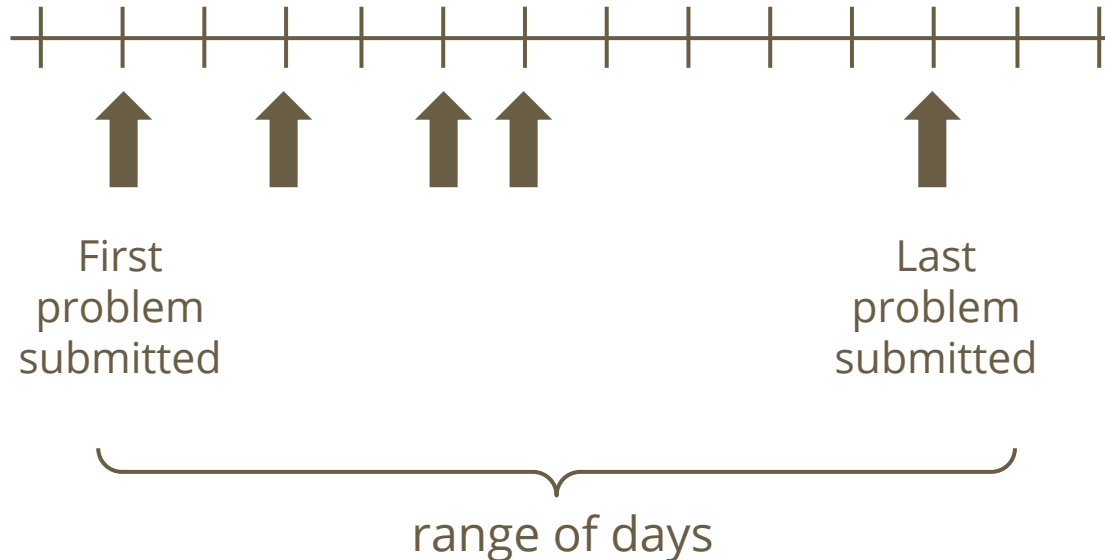
- ... did NOT increase engagement metrics for all learners
  - Participating, exploring, completing, verifying
  - Posting to the forum, attempting a problem, watching a video

## Does running a MOOC in SP vs IP ...

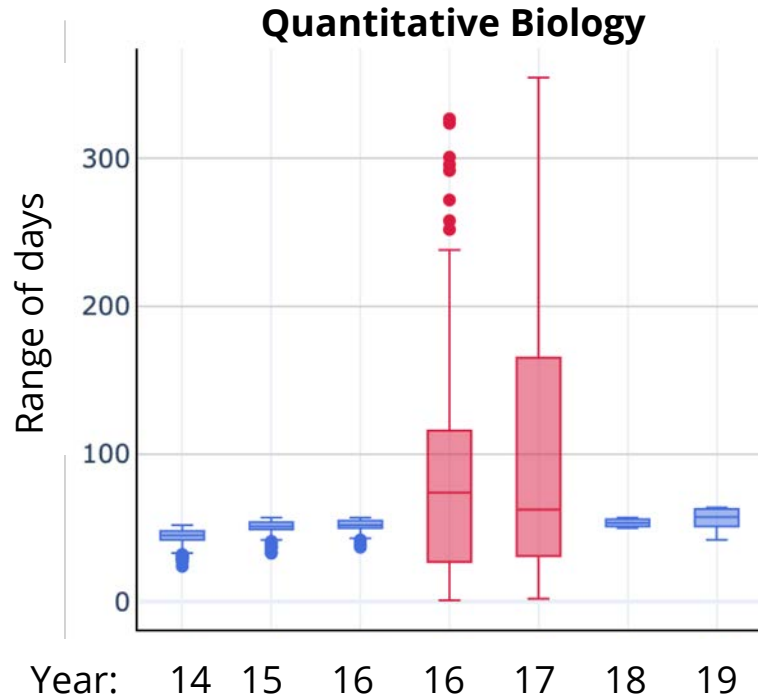
- ... increase activity of learners who complete the MOOC?
  - Submitting a problem in a greater range of days
  - Submitting a in a greater total number of days

# Does running a MOOC in SP vs IP result in learners who complete the MOOC submitting problems in a greater range of days?

Range of days = last - first date a problem submitted during active run



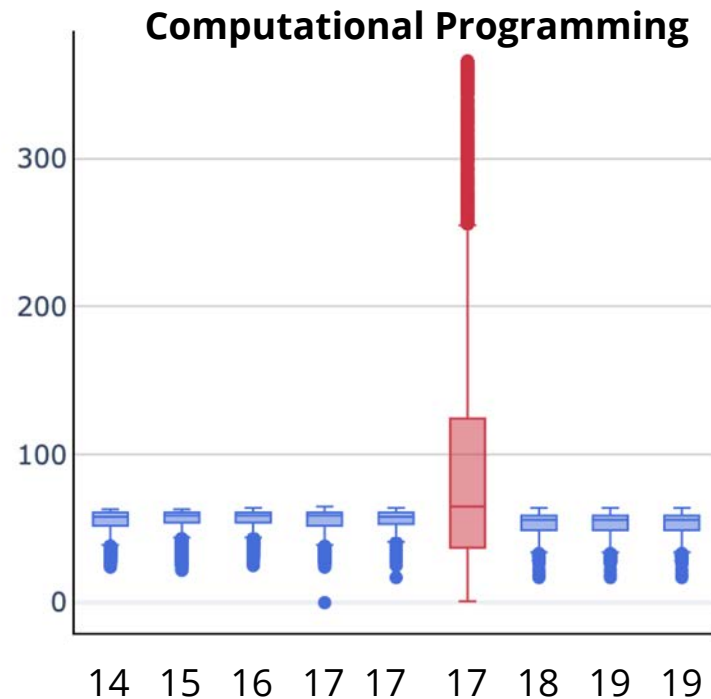
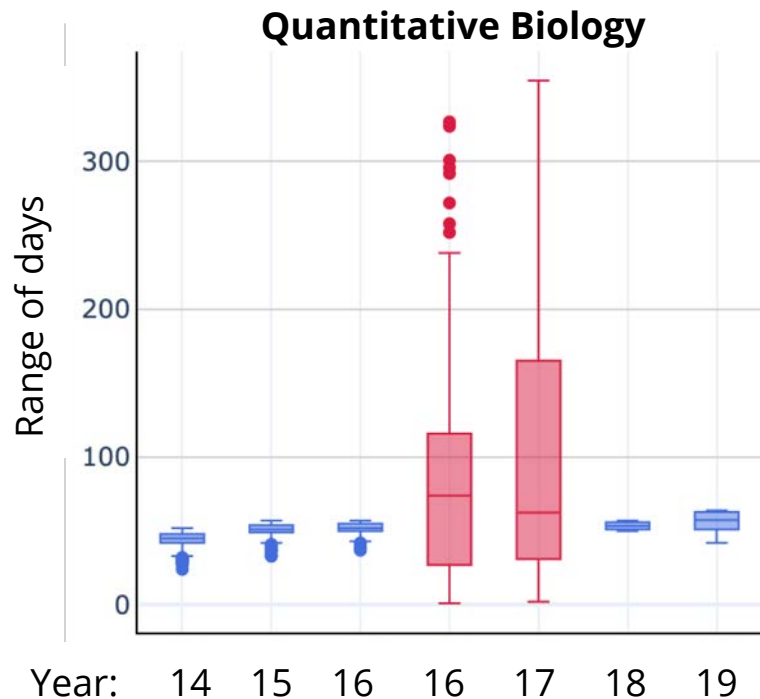
# Running a MOOC in SP does result in learners who complete the MOOC submitting problems in a greater range of days



Color Legend: IP runs SP Runs



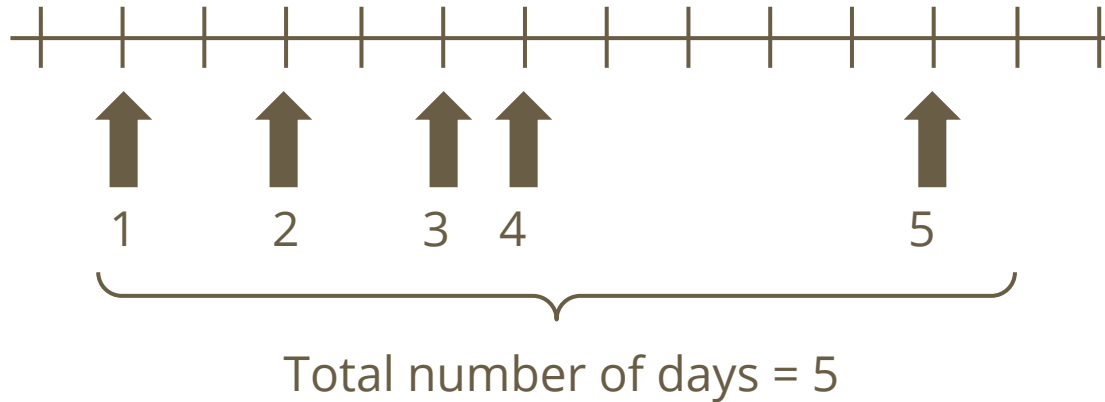
# Running a MOOC in SP does result in learners who complete the MOOC submitting problems in a greater range of days



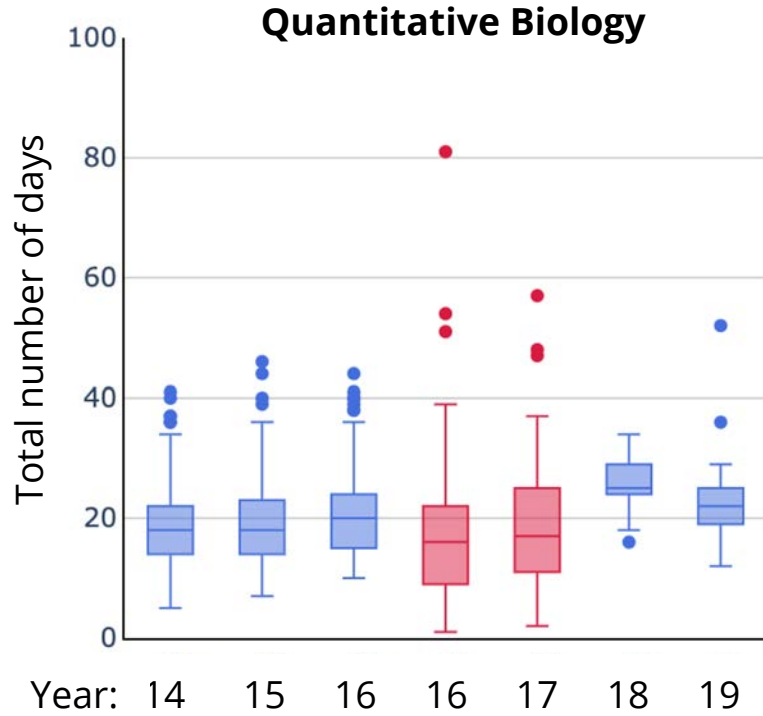
Color Legend: IP runs SP Runs

# Does running a MOOC in SP vs IP result in learners who complete the MOOC submitting problems in a greater total number of days?

Total number of days = unique days problems submitted during active run

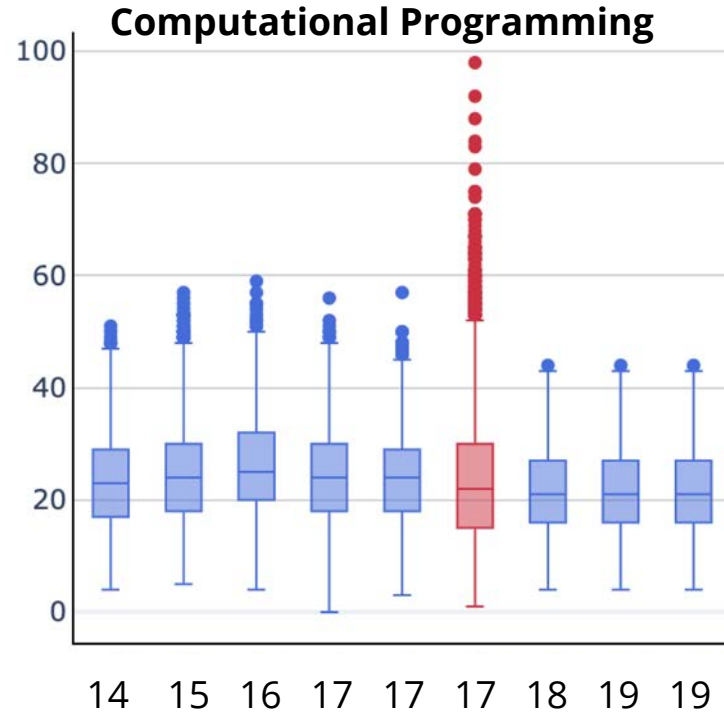
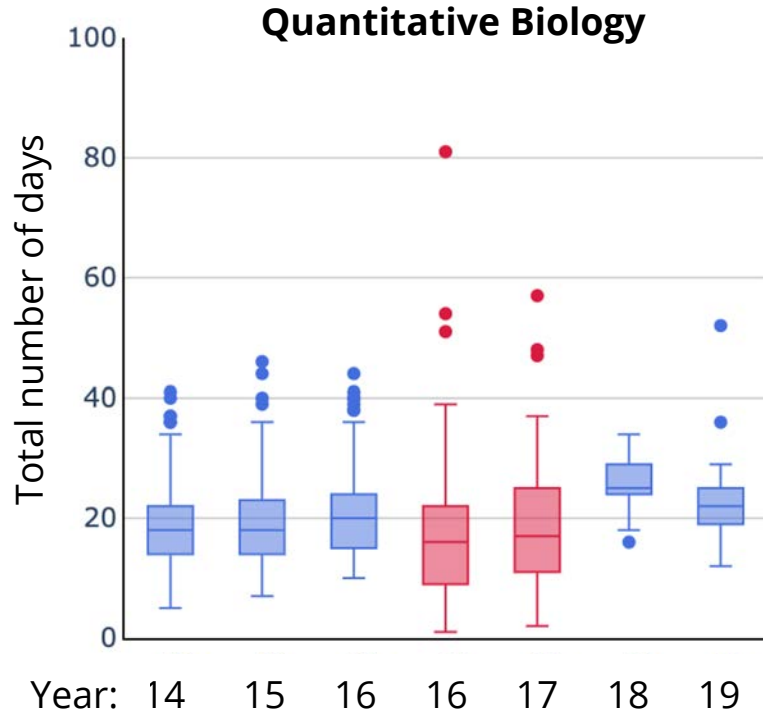


# Running a MOOC in SP does NOT result in learners who complete the MOOC submitting problems in a greater total number of days



Color Legend: IP runs SP Runs

# Running a MOOC in SP does NOT result in learners who complete the MOOC submitting problems in a greater total number of days



Color Legend: IP runs SP Runs

# Running a MOOC in SP vs IP ...

- ... **did NOT increase engagement metrics for all learners**
  - Participating, exploring, completing, verifying
  - Posting to the forum, attempting a problem, watching a video
  
- ... **did NOT increase activity of learners who complete the MOOC**
  - Submitted problems in a **greater** range of days
  - Submitted problems in **less or similar** total number of days
  - Attempted fewer problems per day

# Thank you!



Biology



[web.mit.edu/mitxbio](http://web.mit.edu/mitxbio)



<http://bit.ly/DLLMIT>



@MITxBio



MITxBio



MITxBio



@mitxbio